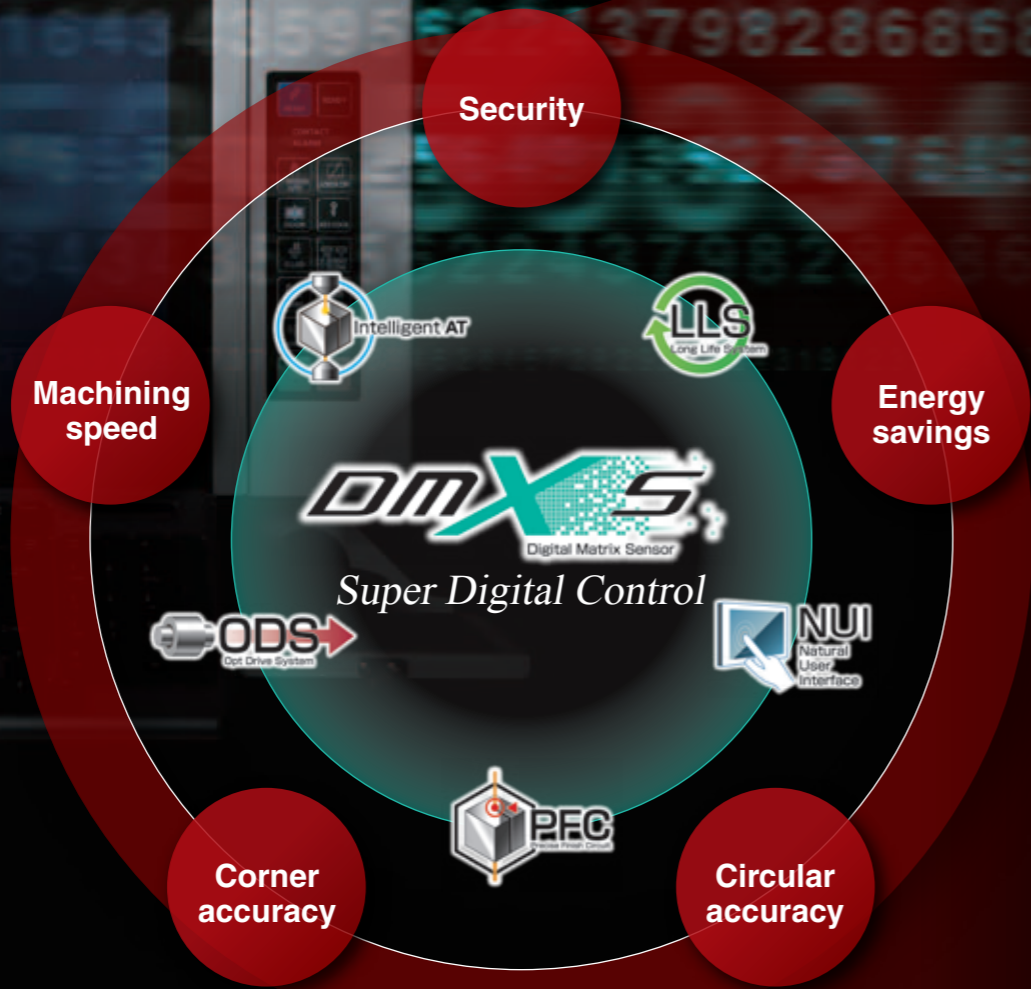


# ADVANCE PLUS control

Super Digital Control × ADVANCE PLUS control expand the capabilities of electrical-discharge machining



MV1200R ADVANCE PLUS



MV2400R ADVANCE PLUS

ADVANCE PLUS control is standard on the MV-R series



(MV1200R/MV2400R)

### Improved machining speed

- New V350 V power-supply control realizes high-speed machining
- Optimized control of power-supply during intermediate and finishing processes reduces total machining time

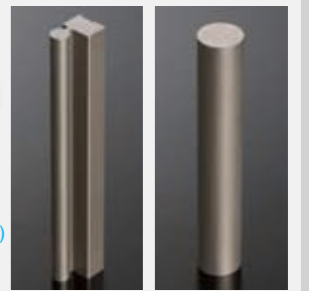


### Machining time reduced up to 17%



Wire electrode :  $\phi 0.2(.008)$ YBS  
Workpiece : Steel(SKD11), t60mm(2.4")

\*Compared to conventional Mitsubishi Electric Wire-cut EDM (FA Series)

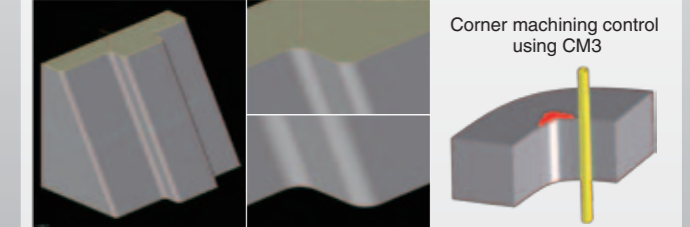


### Improved corner accuracy

- ODS provides provides high accuracy even when cutting a U-V independent tapered shape
- Machining accuracy is improved in very small inside & outside corn radii



### Corner accuracy $\pm 1\mu\text{m}$



<Top surface of arbitrary shape up and down / Bottom surface of circle command>

### Improved circular accuracy

- Compensation accuracy improved by new AFC III servo control



### Circular accuracy within 2 $\mu\text{m}$



Wire electrode :  $\phi 0.2(.008)$ YBS  
Workpiece : Steel(SKD11), t30mm(1.2")

### Energy savings

- Energy consumption is reduced according to the current job ending time and the next days starting time (Sleep Mode)



### Power consumption reduced up to 69%



\*Compared to conventional Mitsubishi Electric Wire-cut EDM (FA Series)

### Security

- Anti-virus protection is provided as standard equipment by one of the world leaders in security control
- Pattern file can be used semi-permanently without renewal



McAfee is a registered trademark of McAfee, Inc. in the United State and other countries

### Anti-virus protection

