

MITSUBISHI ELECTRIC CORPORATION
PUBLIC RELATIONS DIVISION
7-3, Marunouchi 2-chome, Chiyoda-ku, Tokyo, 100-8310 Japan

FOR IMMEDIATE RELEASE

No. 3353

Customer Inquiries
Business Innovation Strategy Div.
Business Innovation Strategy Group
Mitsubishi Electric Corporation

Media Inquiries
Public Relations Division
Mitsubishi Electric Corporation

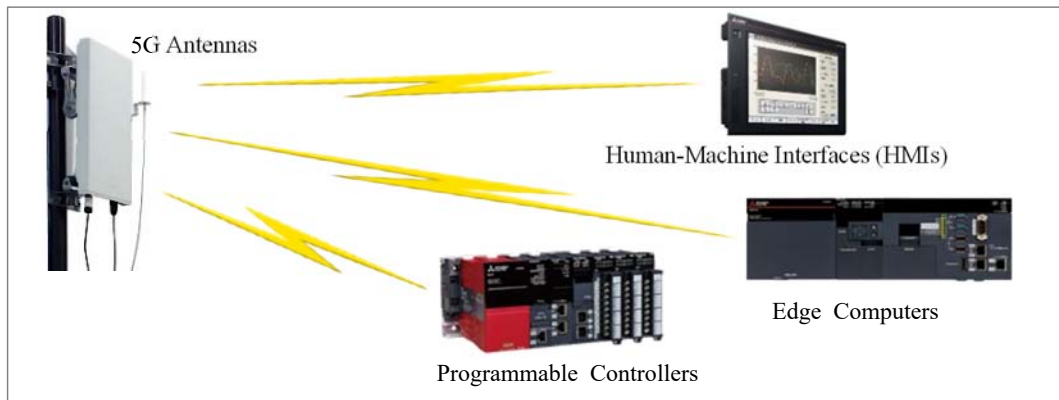
www.MitsubishiElectric.com/

prd.gnews@nk.MitsubishiElectric.co.jp
www.MitsubishiElectric.com/news/

Mitsubishi Electric Begins Demonstrating Local 5G System in Japan

Aiming at new 5G services, such as one-stop solutions via local 5G systems

TOKYO, May 18, 2020 – [Mitsubishi Electric Corporation](https://www.mitsubishielectric.com) (TOKYO: 6503) today announced that its Nagoya Works in Nagoya, Aichi Prefecture has begun a demonstration test of a local 5G system, which Japan's Ministry of Internal Affairs and Communications (MIC) has licensed for use in a limited area and operating with a different frequency band, 28.2GHz-28.3GHz, than those deployed by mobile operators. In the coming future, the company expects to deploy local 5G systems to deliver new services and businesses incorporating a wide range of Factory Automation (FA) and other products.



Equipment being deployed for the local 5G system demonstration test

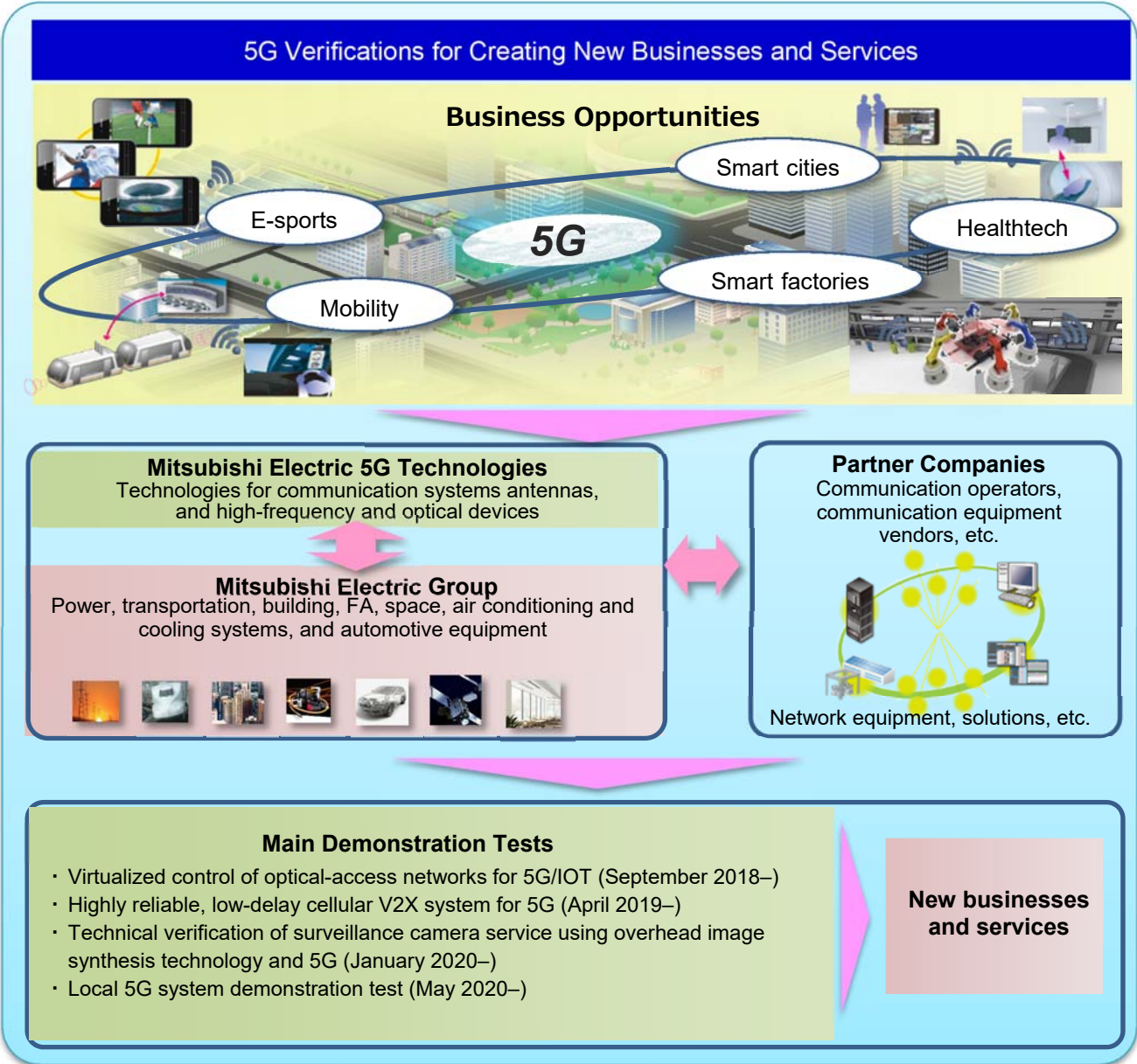
The test is designed to verify wireless transmission between local 5G base stations and Mitsubishi Electric's FA products. It will also help to confirm various possible uses of envisioned local 5G systems, such as remote operation and maintenance support, usage of augmented and virtual reality for enhanced work efficiency, and more.

Background

5G, which achieves ultra-high speed, ultra-low latency and multiple simultaneous connections, is poised to

support advanced infrastructure using frequency bands mainly allocated to telecommunications operators. In December 2019, however, MIC began accepting applications for local 5G systems to enable local governments and companies to meet diversifying communication needs, including due to the spread of Internet of Things (IoT) devices.

Mitsubishi Electric is now developing local 5G systems for one-stop solutions that incorporate communication-system and 5G technologies as well as its various products and services, working in close collaboration with customers and partner companies to create new businesses and services.



Future Developments

Mitsubishi Electric expects to launch demonstration test at other business sites as well as establish new 5G

infrastructure at its business sites and laboratories. The 5G Open Innovation Laboratory, for example, which is scheduled to begin operating at the company's Information Technology R&D Center in Kamakura, Kanagawa Prefecture within the current fiscal year ending in March 31, 2021, will serve as a base for joint research and demonstrations with customers and partner companies to create new businesses and services.

To create new businesses and services, Mitsubishi Electric is collaborating with partner companies on studying 5G uses and conducting demonstration tests that incorporate basic 5G-related technologies, including communication systems, antenna technologies and both high-frequency and optical devices.

###

About Mitsubishi Electric Corporation

With nearly 100 years of experience in providing reliable, high-quality products, Mitsubishi Electric Corporation (TOKYO: 6503) is a recognized world leader in the manufacture, marketing and sales of electrical and electronic equipment used in information processing and communications, space development and satellite communications, consumer electronics, industrial technology, energy, transportation and building equipment. Mitsubishi Electric enriches society with technology in the spirit of its corporate statement, "Changes for the Better," and environmental statement, "Eco Changes." The company recorded a revenue of 4,462.5 billion yen (U.S.\$ 40.9 billion*) in the fiscal year ended March 31, 2020. For more information, please visit www.MitsubishiElectric.com

*U.S. dollar amounts are translated from yen at the rate of ¥109=U.S.\$1, the approximate rate on the Tokyo Foreign Exchange Market on March 31, 2020