

NA1200

High-grade model combines high accuracy and ease of use



NA1200

NA2400

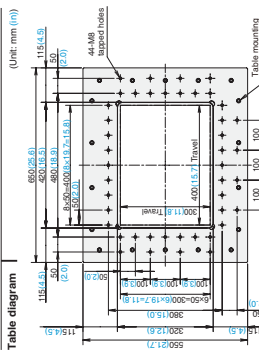
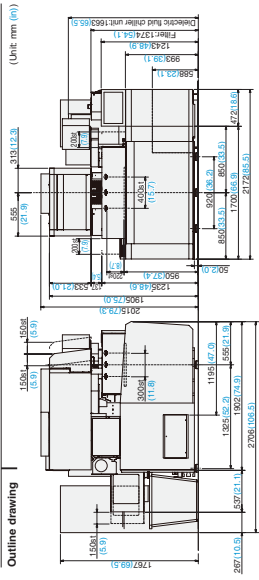
High-grade model combines high accuracy and ease of use With larger capacity.



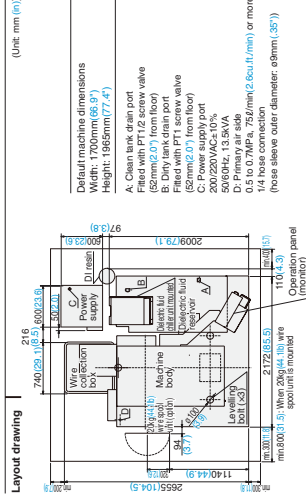
NA2400

NA1200

Outline drawing



Layout drawing



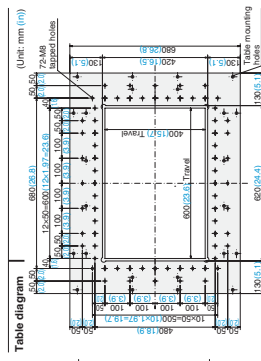
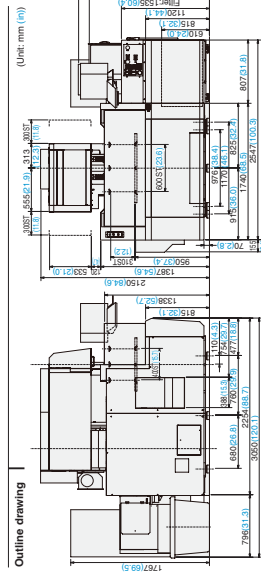
Machine specifications (standard specifications)	
Model	NA1200
Maximum working dimensions (WxDxH)	(mm) 1100x790x2160
Maximum working weight	(kg) 500 (1100)
Table dimensions	(mm) 650 (26.0) x 550 (21.7)
Machining Level (XY-Z)	(mm) 100 (3.9) x 100 (3.9) x 200 (7.9)
Machining Level (UV)	(mm) 15 (0.6) x 200 (7.9)
Wire lead angle	(deg) 1.5
Wire diameter	(mm) 0.1 (0.04) to 0.3 (0.12) *
Weight	(kg) 250 (550)
Tank capacity	(L) 1.0 (0.26)
Filtration method	Paper filter (two)
Water purifier (DI unit)	Unit cooler
Dielectric fluid chiller unit	Unit cooler
Weight (when dry)	(kg) 300 (660)

* 1, 0.25 wire ID-picks come as standard for the USA market.

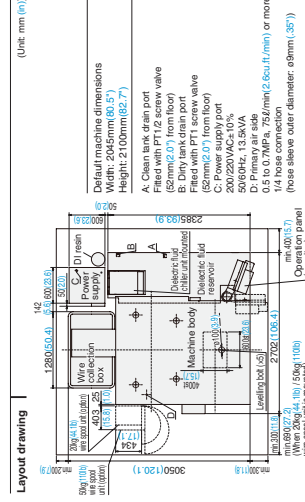
General input	
Required air pressure	(MPa) 0.5 to 0.7 (7.0 to 10.0)
Puls rate	(Hz) 0.1 (1/min)
Puls rate	(Hz) 0.5 to 1.0 (5.0 to 10.0)

NA2400

Outline drawing



Layout drawing



Machine specifications (standard specifications)	
Model	NA2400
Maximum working dimensions (WxDxH)	(mm) 1350x1120x2160
Maximum working weight	(kg) 550 (1210)
Table dimensions	(mm) 800 (31.5) x 600 (23.6)
Machining Level (XY-Z)	(mm) 100 (3.9) x 100 (3.9) x 200 (7.9)
Machining Level (UV)	(mm) 15 (0.6) x 200 (7.9)
Wire lead angle	(deg) 1.5
Wire diameter	(mm) 0.1 (0.04) to 0.3 (0.12) *
Weight	(kg) 380 (837)
Tank capacity	(L) 1.0 (0.26)
Filtration method	Paper filter (two)
Water purifier (DI unit)	Unit cooler
Dielectric fluid chiller unit	Unit cooler
Weight (when dry)	(kg) 350 (770)

* 1, 0.25 wire ID-picks come as standard for the USA market.

General input	
Required air pressure	(MPa) 0.5 to 0.7 (7.0 to 10.0)
Puls rate	(Hz) 0.1 (1/min)
Puls rate	(Hz) 0.5 to 1.0 (5.0 to 10.0)