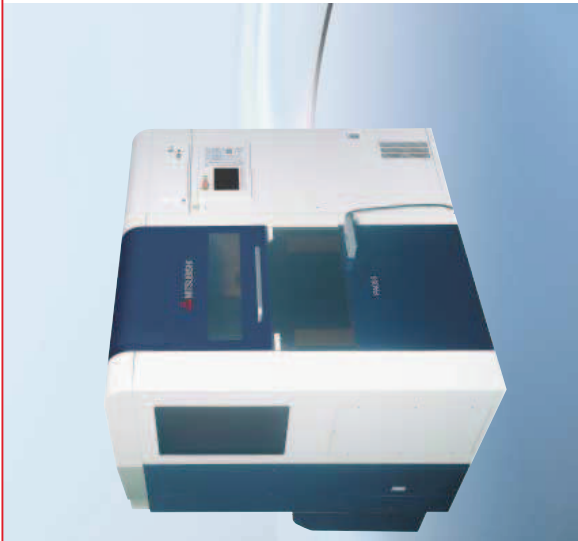


# PA05S



**Achieved  $\pm 2\mu\text{m}$  machining accuracy (Note 1)**  
**Compatible with super-fine  $\phi 0.02$  (.0008") wire**

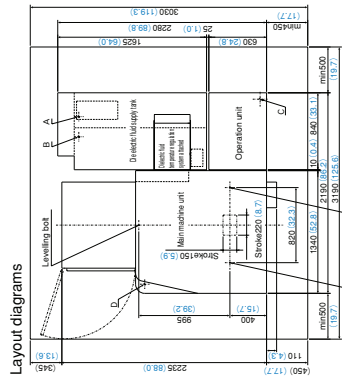
(Note 1) The accuracy follows Mitsubishi specified machining.

### Main options

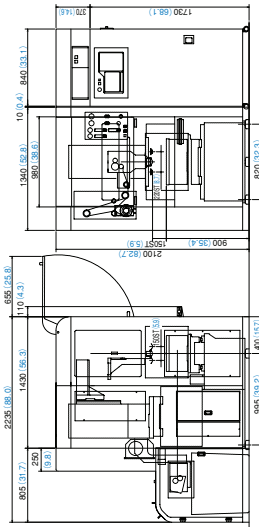
- $\phi 0.15$  (0.061), 0.2 $\phi$ T specifications
- Angle Master

- A: Clean fluid drain
- B: PT1 thread gate valve
- C: PT1 thread gate valve
- D: Primary air side

(Internal diameter of hose gauging is  $\phi 9$ )



### Outline dimensions



### Machine specifications (standard specifications)

Model PA05S	
Max. envelope dimension (W/D/H) [mm] (in)	500 (19.7) X 390 (15.4) X 145 (5.7)
Max. workpiece weight [kg]	100
Table dimensions [mm] (in)	500 (19.7) X 460 (18.1)
Machining range (X/Y/Z) [mm] (in)	220 (8.7) X 150 (5.9) X 150 (5.9)
Machining range (U/X/V) [mm] (in)	$\pm 21$ (0.8) X $\pm 21$ (0.8)
Max. taper angle [°]	10 (by workpiece or 10mm tool)
Wire diameter [mm] (in)	0.02 (0.0008) - 0.2 (0.008)
Weight [kg]	3000

Tank capacity [L]	470
Filtered particle size [µm]	3
Filter element	Paper filter (X2)
Passive supply unit (package size) [L]	20
Dielectric fluid chiller unit	Chiller Unit
Weight (when dry) [kg]	350
Width [mm] (in)	1560 (61.4)
Height [mm] (in)	2150 (84.6)

General input: AC 3-phase	200/220 VAC $\pm 10\%$
Power [kW]	13.5
50/60 Hz, power ratio 0.9	
Pressure [MPa]	0.5 - 0.7
Flow rate [L/min]	75 or more

# PA20



**Achieved  $\pm 2\mu\text{m}$  machining accuracy (Note 1)**  
**Realizing super-finish machining (Digital-FS) option**

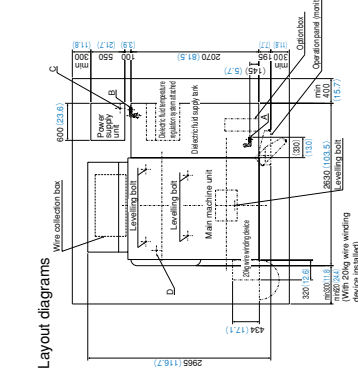
(Note 1) The accuracy follows Mitsubishi specified machining.

### Main options

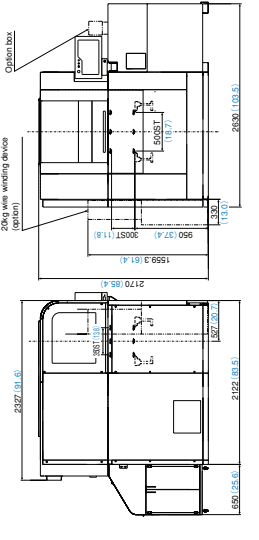
- Digital-FS power supply
- Fine wire specifications ( $\phi 0.05$ ), (0.02)
- 20kg wire specifications
- AC200/220V  $\pm 10\%$
- 50/60Hz, 13.5kVA
- Motorized shifter specifications
- Angle Master

- A: Clean fluid drain
- B: Used fluid drain
- C: PT1 thread gate valve
- D: Primary air side

(Internal diameter of hose gauging is  $\phi 9$ )



### Outline dimensions



### Machine specifications (standard specifications)

Model PA20M	
Max. envelope dimension (W/D/H) [mm] (in)	1050 (41.3) X 800 (31.5) X 285 (11.2)
Max. workpiece weight [kg]	1500
Table dimensions [mm] (in)	780 (30.3) X 630 (24.8)
Machining range (X/Y/Z) [mm] (in)	500 (19.7) X 300 (11.8) X 300 (11.8)
Machining range (U/X/V) [mm] (in)	$\pm 21$ (0.8) X $\pm 21$ (0.8)
Max. taper angle [°]	10 (by workpiece or 10mm tool)
Wire diameter [mm] (in)	0.05 (0.002) - 0.3 (0.012)
Weight [kg]	4000

Tank capacity [L]	750
Filtered particle size [µm]	3
Filter element	Paper filter (X2)
Passive supply unit (package size) [L]	20
Dielectric fluid chiller unit	Chiller Unit
Weight (when dry) [kg]	400
Width [mm] (in)	2005 (78.9)
Height [mm] (in)	2220 (87.4)

General input: AC 3-phase	200/220 VAC $\pm 10\%$
Power [kW]	13.5
50/60 Hz, power ratio 0.9	
Pressure [MPa]	0.5 - 0.7
Flow rate [L/min]	75 or more